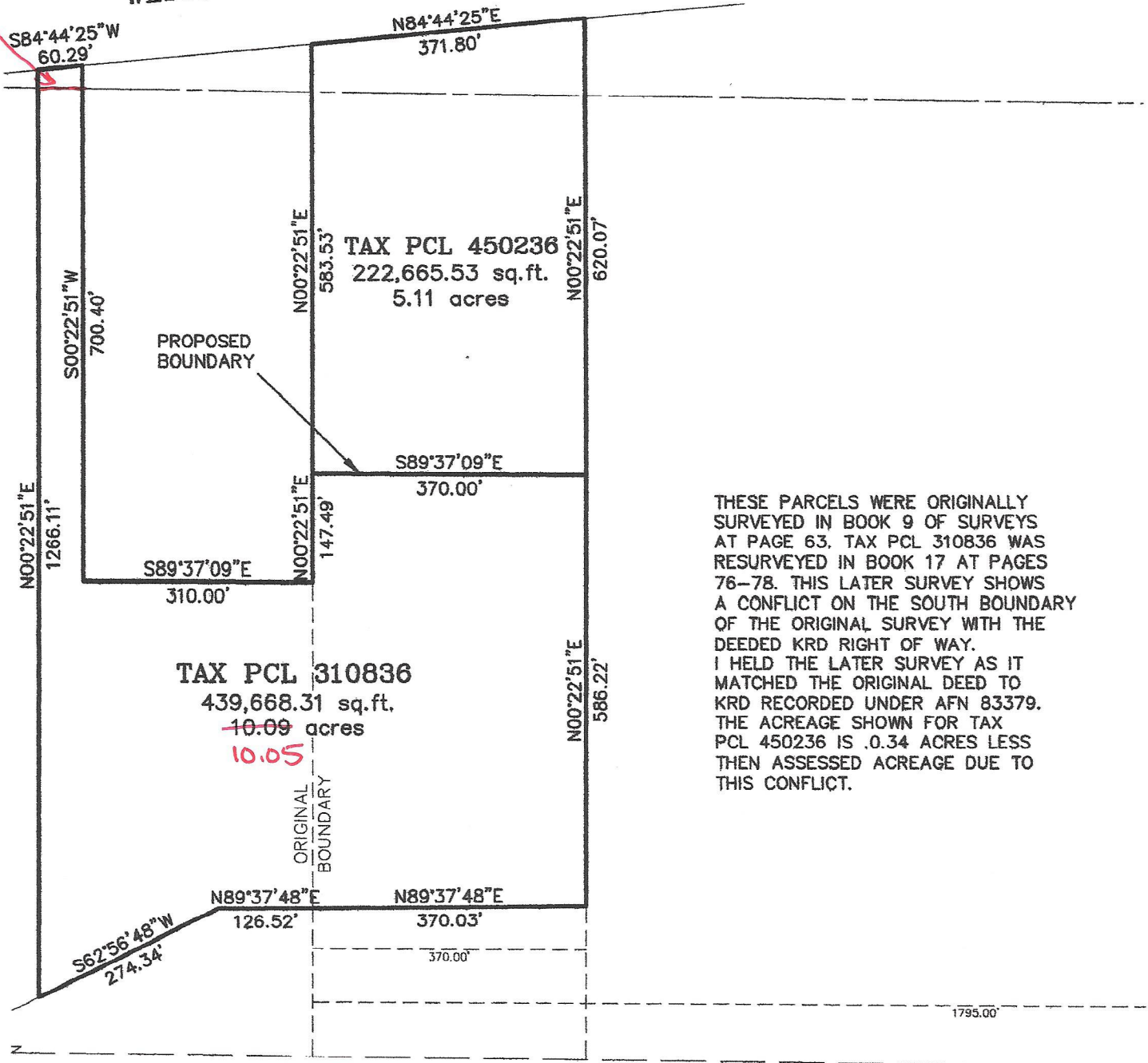


Tax 150836  
 Not included  
 in application  
 WESTSIDE ROAD

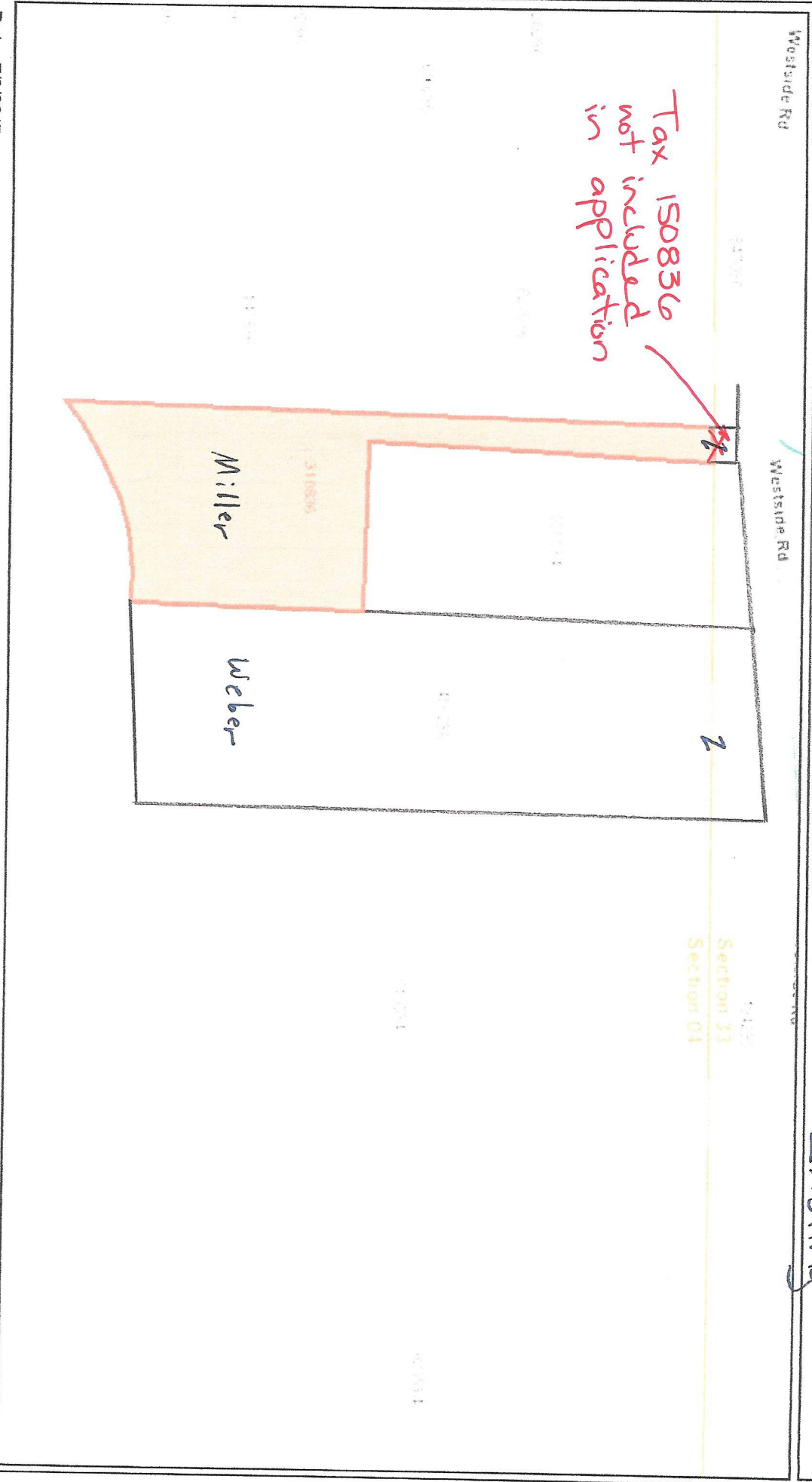
Proposed



THESE PARCELS WERE ORIGINALLY SURVEYED IN BOOK 9 OF SURVEYS AT PAGE 63. TAX PCL 310836 WAS RESURVEYED IN BOOK 17 AT PAGES 76-78. THIS LATER SURVEY SHOWS A CONFLICT ON THE SOUTH BOUNDARY OF THE ORIGINAL SURVEY WITH THE DEEDED KR D RIGHT OF WAY. I HELD THE LATER SURVEY AS IT MATCHED THE ORIGINAL DEED TO KR D RECORDED UNDER AFN 83379. THE ACREAGE SHOWN FOR TAX PCL 450236 IS .034 ACRES LESS THEN ASSESSED ACREAGE DUE TO THIS CONFLICT.

# MILLERWEBER EXISTING PARCELS

Existing



Date: 7/6/2017

1 inch = 376 feet  
Relative Scale 1:4,514

**Disclaimer:**  
Kittitas County makes every effort to produce and publish the most current and accurate information possible. No warranties, expressed or implied, are provided for the data, its use, or its interpretation. Kittitas County does not guarantee the accuracy of the material contained herein and is not responsible for any use, misuse or representations by others regarding this information or its derivatives.

